

**Copystar CS 8353ci / 9003i Series**

**Up to 90 ppm B&W / 70 ppm Color**

**1200 x 1200 dpi Image Quality**

**Professional Finishing Options**



# The power to simplify the dynamics of business.

**COPYSTAR**

KYOCERA TECHNOLOGY

[copystar.com](http://copystar.com)

# Always be ready to react with speed and agility.

The CS 8353ci and CS 9003i Series are designed to serve the multifaceted needs of enterprises and organizations. They deliver high-speed, reliable performance with a touchscreen control panel that empowers users to customize workflows and integrate cloud-based applications.

Reimagine the way you work by elevating the way you connect, communicate and share information. Powerful multifunction capabilities help to streamline complex tasks and increase workflow productivity. When it's time to put the big ideas to paper, these systems have you covered end-to-end. Deliver your message with vivid color, sharp graphics and a professional finish. Options include tri-fold, booklet and multi-position staple.

Business today moves fast. Your technology should move you faster. Precision engineering, remote monitoring and an overall ease of use keep staff and systems operating at their highest level of efficiency. In document intensive environments, high-speed scanning, and a host of distribution options allows you to move information to where it needs to be within seconds. One platform, one interface and the ability to right-size custom configurations. With the CS 8353ci and CS 9003i Series you get it all. And with Copystar you get the support of a trusted partner. We put knowledge to work, where it works for you.





## High productivity.

The CS 8353ci and CS 9003i Series will help your staff maintain the critical uptime your business requires. With print speeds up to 70 ppm in color and up to 90 ppm in black & white, consistent quality, reliability, customization options and professional finishing, they were made for your high-speed, high-volume workplace.



## Reliable media handling.

Print on sheets up to 12" x 18" and substrates up to 300 gsm to produce more jobs on a single device. Increase media capacity from the standard 4,150 sheets up to a maximum 7,650 sheets to keep projects moving with less time spent filling media trays.



## Robust scanning.

Capture images and information with speed and accuracy up to 220 impressions per minute. Keep critical communications safe and secure with multiple ways to distribute documents.



## Enhanced security.

The Standard Data Security Kit provides more ways to ensure important documents and data are protected, in addition to the Embedded Trusted Platform Module, Secure Boot and Runtime Integrity Check. Rely on standard user security tools to keep information and access under control.



# New ways to conquer the workday.



## A larger display that works the way you do.

Make navigating your workflows easy with a bright 10.1" Touch Screen Display, standard on all models. Fewer hard keys and an intuitive, modern swipe-based interface provides users with a friendly, tablet-like experience. Access the HyPAS Business Applications you depend on to succeed with a simple touch. An optional numeric keypad is also available.

## Exceptional color output on every project.

Why settle for ordinary? The CS 8353ci Series delivers superior color and image quality, with smooth gradations, vivid color reproduction for life-like skin tones and outstanding contrast. No matter the document, you can rely on fast, affordable color that exceeds expectations and puts your best foot forward.

## Power through scanning and copying tasks.

A 270-Sheet DSDP helps you to quickly copy presentations, capture information, store records and more. Scan duplex pages at up to a remarkable 220 impressions per minute. Turn scanned documents into searchable PDFs with standard OCR, and take advantage of familiar Scan-to functions including email, folders, FTP and USB drives.

## End with a big finish.

The 100-sheet Staple Finisher adds polish to printed documents while saving your team valuable time. With the capacity to stack up to 4,000 sheets, there's no need to rush to unload after sending your job to print. Optional Booklet and Tri-fold finishing further expand the range of deliverables you can quickly and affordably produce in-house.



## Challenging color workflows? Not anymore.

For users who rely on complex, color-intensive output, choose the optional EFI® Fiery® Print System 16 for the CS 8353ci and CS 7353ci to drive even greater productivity and produce consistent results. Featuring integrated tools to help users of all levels achieve precise, high-quality color, the system offers a powerful controller to streamline job processes and make the creation of high-value deliverables, including booklets, easier to manage.

# The Copystar CS 8353ci / 9003i Series Options

**MT-730 (B)**  
7 Bin Mailbox

**Copy Tray (D)**

**Keyboard Tray Kit**

**DT-730 (B)**  
Original Hard Copy Holder

**DF-710**  
4,000 Sheet Finisher  
65 Staple / 65 Manual Staple

**DF-7130**  
4,000 Sheet Finisher  
100 Staple / 100 Manual Staple

**NK-7130**  
Numeric Keypad

**BF-730**  
Booklet / Tri-fold Unit

**BF-9100**  
Booklet / Tri-fold Unit

**Stapler Option**  
SH-10 for BF-730 / BF-9100  
SH-12 for DF-710  
SH-14 for DF-7130

**Hole Punch Option**  
PH-7A for DF-710 / DF-7130

**PF-730 (B)**  
2 x 500 Sheet Tray  
(Ledger)

**PF-740 (B)**  
2 x 1,500 Sheet Tray  
(Letter)

**PF-7130**  
500 Sheet MPT

**PF-7120**  
3,000 Sheet Side Deck  
(Letter)

# Keep everyone on the same page.



## Support mobile employees

Support mobile employees by putting print, scan and send features at their fingertips with KYOCERA Mobile Print, Apple AirPrint®, Google Cloud Print™ and Mopria®. Standard Near Field Communication (NFC) for Android™ and Wi-Fi Direct provides added smart device convenience.

## Simplify IT management

Simplify IT management with KYOCERA's Command Center RX, a standard web-based interface that enables remote printing, file sharing, device monitoring, settings updates and address book entry, right from your desktop.

## Print and share frequently used files

Print and share frequently used files with Document Box, a secure area on the hard drive where documents are conveniently stored and easily retrieved.

## Reduce costs

Reduce costs with Proof Copy Mode. Print and approve a sample copy before duplicating large documents to prevent waste.



## Remote monitoring redefined.

Optimize device uptime and reduce costs with KYOCERA Fleet Services (KFS), a highly-secure cloud-based monitoring solution that offers real-time visibility into:

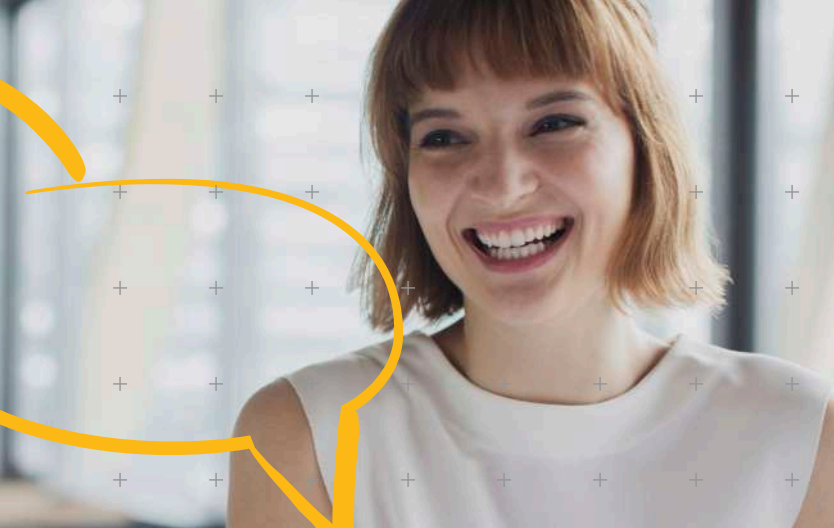
- **Device Status:** Take a proactive approach to error resolution to ensure that your fleet operates at peak performance.
- **Counter Activity:** Eliminate administrative burden with automatic meter reading, for accurate and timely billing.
- **Supply Levels:** View consumable levels to prevent unnecessary workflow interruptions.
- **Usage Trends:** Identify print, copy, scan and error code trends to make more informed decisions (fleet right-sizing), and further optimize workflow.



## Keep work safe and secure.

The CS 8353ci / 9003i Series offers standard security features built into the device software, as well as optional enhancements to help keep sensitive documents from falling into the wrong hands. Work confidently with:

- Standard Data Security Kit (E) for overwrite and encryption, to help safeguard mission-critical workflows.
- Standard Embedded TPM
- Standard Secure Boot
- Standard Run-Time Integrity Check
- Added "Power Users"
- PDF Encryption to restrict access for displaying and printing PDFs by assigning a secure password.
- Private Print function with password protection and User Authentication.



## There's an app for that.

Kyocera's robust portfolio of customizable business applications lets your team accomplish even more, further boosting productivity. Leverage information how, when and where you need it.

Take advantage of KYOCERA Net Manager, a server-based web application, to efficiently provide secure printing and copying and enable easy accounting of print-related expenses. The Print&Follow function allows users to securely print to any printer managed by KYOCERA Net Manager.

Kyocera Business Apps are powered by HyPAS™ (Hybrid Platform for Advanced Solutions), a Kyocera-developed software platform that expands your MFP's core capabilities with simple touch-screen operations that address your unique workflow needs. From mobile and cloud to cost control and security solutions, these business applications seamlessly and securely integrate with Copystar MFPs.



## Print smarter for the planet.

The CS 8353ci / 9003i Series helps your business maintain a tidy environmental footprint by reducing waste and eliminating unnecessary energy consumption.

- Exclusive long-life technology and consumables.
- Programmable Energy Saver function helps you control costs, and Low Typical Electricity Consumption (TEC) values support your goals for energy conservation.
- ENERGY STAR® compliant, with Low Power Mode and Sleep Mode settings.

# COPYSTAR

KYOCERA TECHNOLOGY

Match the needs of your team and your workflow with the right device. For detailed information regarding the performance of the individual models listed below, please refer to the CS 8353ci / 9003i Series Specifications Guide.

## Specifications

### CS 8353ci

**Pages Per Minute:**

Black – Letter: 83 ppm, Legal: 49 ppm, Ledger: 41 ppm, 12" x 18": 41 ppm (print only)

Color – Letter: 70 ppm, Legal: 42 ppm, Ledger: 35 ppm, 12" x 18": 35 ppm (print only)

**Warm Up Time:** 44 Seconds or Less (Power On)

**First Page Out:**

Copy: 4.8 Seconds or Less Black, 5.9 Seconds or Less Color

Print: 4.9 Seconds or Less Black, 6.1 Seconds or Less Color

**Typical Electricity Consumption (TEC):**

120V: 1.70 kWh/week;

220V: 1.68 kWh/week

**Weight:** 401.2 lbs

**Maximum Monthly Duty Cycle:** 450,000 Pages per Month

### CS 9003i

**Pages Per Minute:**

Black – Letter: 90 ppm, Legal: 54 ppm, Ledger: 45 ppm, 12" x 18": 45 ppm (print only)

**Warm Up Time:** 30 Seconds or Less (Power On)

**First Page Out:**

Copy: 3.6 Seconds or Less Black

Print: 4.0 Seconds or Less Black

**Typical Electricity Consumption (TEC):**

120V: 1.86 kWh/week;

220V: 1.81 kWh/week

**Weight:** 330.7 lbs

**Maximum Monthly Duty Cycle:** 450,000 Pages per Month

### CS 7353ci

**Pages Per Minute:**

Black – Letter: 73 ppm, Legal: 43 ppm, Ledger: 36 ppm, 12" x 18": 36 ppm (print only)

Color – Letter: 65 ppm, Legal: 39 ppm, Ledger: 32 ppm, 12" x 18": 32 ppm (print only)

**Warm Up Time:** 44 Seconds or Less (Power On)

**First Page Out:**

Copy: 5.4 Seconds or Less Black, 6.2 Seconds or Less Color

Print: 5.3 Seconds or Less Black, 6.3 Seconds or Less Color

**Typical Electricity Consumption (TEC):**

120V: 1.43 kWh/week;

220V: 1.34 kWh/week

**Weight:** 402.1 lbs

**Maximum Monthly Duty Cycle:** 400,000 Pages per Month

### CS 8003i

**Pages Per Minute:**

Black – Letter: 80 ppm, Legal: 48 ppm, Ledger: 40 ppm, 12" x 18": 40 ppm (print only)

**Warm Up Time:** 30 Seconds or Less (Power On)

**First Page Out:**

Copy: 3.7 Seconds or Less Black

Print: 4.1 Seconds or Less Black

**Typical Electricity Consumption (TEC):**

120V: 1.47 kWh/week;

220V: 1.44 kWh/week

**Weight:** 330.7 lbs

**Maximum Monthly Duty Cycle:** 450,000 Pages per Month

### CS 7003i

**Pages Per Minute:**

Black – Letter: 70 ppm, Legal: 42 ppm, Ledger: 35 ppm, 12" x 18": 35 ppm (print only)

**Warm Up Time:** 30 Seconds or Less (Power On)

**First Page Out:**

Copy: 4.2 Seconds or Less Black

Print: 4.8 Seconds or Less Black

**Typical Electricity Consumption (TEC):**

120V: 1.24 kWh/week;

220V: 1.21 kWh/week

**Weight:** 330.7 lbs

**Maximum Monthly Duty Cycle:** 400,000 Pages per Month



Specifications and design are subject to change without notice. For the latest on connectivity visit [copystar.com](http://copystar.com). Copystar, KYOCERA Net Manager, and Command Center RX are trademarks of the Kyocera Companies. AirPrint is a trademark of Apple, Inc. Google Cloud Print is a trademark of Google, Inc. Mopria is a trademark of Mopria Alliance, Inc. All other trademarks are the property of their respective owners.